

Biomimicry: How Nature Inspires Technology

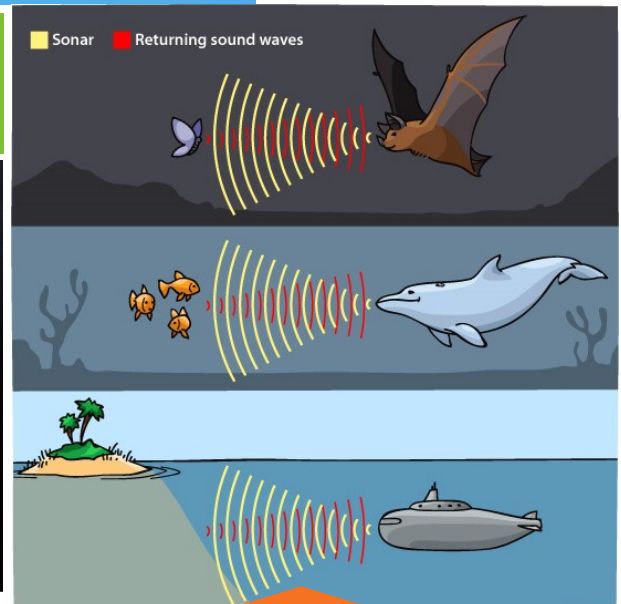
Believe it or not, the computers you just built were inspired by nature! Engineers continue to be inspired by nature in order to create modern day technologies like robotics, motion tracking and aerodynamic solutions. Think of the way a human brain communicates with the rest of the body and compare this to a computer!

Biomimicry is an approach to science that seeks solutions to human challenges by copying nature's time-tested patterns and strategies. We take the innovations that exist in nature and apply them to human technology.

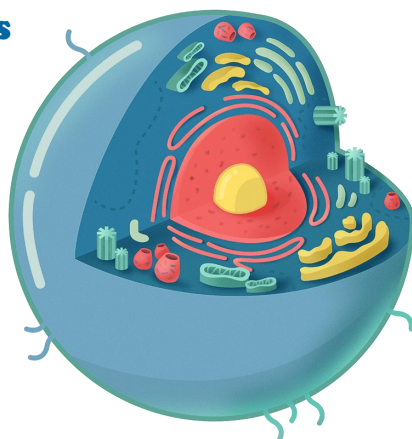


Airplanes are modeled after a birds wing design and the streamlined shapes of their bodies!

Adhesives for microelectronics and space applications were inspired by the powerful adhesion abilities of geckos and lizards. Look at those toes!



Basic water filters are inspired by our cells' membranes: certain things pass through while others are kept out.



The design for radar and sonar equipment was inspired by the echolocation abilities of bats and dolphins.

Adventures in the Park: Seasoned Scholars

